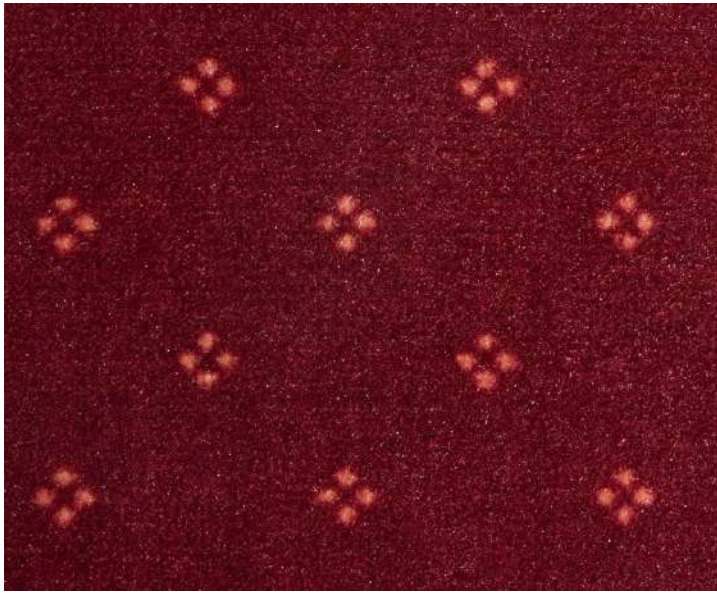


# CHIC

COLLECTION:UNIQUE



01



02



03



04



05

# CHIC

Repeat:  
0.06 x 0.06 M



## SPECIFICATIONS:

**Carpet Type:**

Wall to Wall or Contract Carpet

**Construction:**

All Cut Pile

**Dye Method:**

Chromojet

**Gauge:**

1 / 10"

**Pile Material:**

100% Nylon

**Pile Height:**

5.0 mm (+/- 0.5)

**Total Height:**

7.0 mm (+/- 0.5)

**Description:**

Haima Printed Carpet (Tufted)

**Wear Classification:**

Heavy Commercial

**Pile Weight:**

630 gr / m2 (+/-5%)

**Total Weight:**

1780 gr / m2 (+/-5%)

**Primary Backing Cloth:**

P.P. woven Cloth

**Secondary Backing:**

Action Back

**Finish Width:**

3.66 m and/or Runner Size (+/- 1 cm)